



# 目录

## CONTENTS

<b>公司简介</b> Corporate Profile	<b>03</b>
<b>荣誉资质</b> Certification & Qualification	<b>05</b>
<b>企业历程</b> Corporate History	<b>07</b>
<b>企业文化</b> Corporate Culture	<b>09</b>
<b>企业实力</b> Corporate Strength	<b>11</b>
<b>塔头式塔机</b> Topkit tower crane	<b>13</b>
<b>平头式塔机</b> Topless tower crane	<b>25</b>
<b>动臂式塔机</b> Luffing jib tower crane	<b>31</b>
<b>施工升降机</b> Building hoist	<b>35</b>
<b>高空作业吊篮</b> Aerial Suspended Platform	<b>37</b>
<b>企业展望</b> Corporate Prospects	<b>39</b>



## 汇五湖四海 结天下朋友>>>

成长于中国工业发展变革的历史，延续着中国工业的辉煌历程，秉承着中国艰苦创业的价值理念和精神财富，以团结开拓的精神和高度的社会责任感，不断创新和自我完善，迎接新的挑战。

Grown up during Chinese industry's development and transformation, the company continues to create glories for Chinese industry, upholding the values and spiritual treasure formed when the country strived arduously to start an undertaking. And, with the united and pioneering spirit and a strong sense of social responsibility, it innovates and improves unceasingly in an effort to meet new challenges.

## 浑金璞玉，需要精雕细琢

持之以恒，方可百炼成钢  
精品——是一项工程  
精品——更是一个信念  
握今天于手里，即明日之辉煌

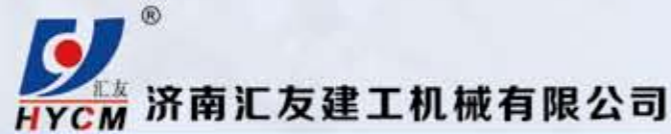
With conscientious and assiduous care, unrefined gold and unpolished jade can become real treasure

With persevering hard work, raw material can be tempered into steel

Producing quality goods—a project

Producing quality goods—more a belief

Seize today to create tomorrow



济南汇友建工机械有限公司，是国家质量监督检验检疫总局认定的建工机械定点生产厂家，山东省建设机械协会会员单位，ISO9001:2000 国际质量体系认证企业。公司坐落于人杰地灵、风景秀丽，素有“小泉城”之称的章丘市，西接省会——泉城济南，东临瓷都淄博，南临胶济铁路，北靠济青高速，交通方便，地理位置得天独厚。

公司成立于 2002 年，注册资本 1500 万元，员工总数 600 人，厂区占地面积 90000 余平方米，下辖两个制造厂分别位于章丘明水章丘赭山工业园，章丘明水经济开发区，主要生产“HYCM 汇友”牌：施工升降机 SC200/200、SC200、SC100/100、SC100；动臂塔式起重机 D300、D160、D125；平头塔式起重机 P7427、P7030、P6016、P5610、P5519、P5515、P5210、P5023、P5020、P5010、P4810；塔头塔式起重机 TC7040、TC7030、TC6518、TC6515、TC6024、TC6018、TC6013、TC6010、TC5612、TC5610、TC5515、TC5513、TC5013、TC5011、TC5010、TC5008、TC4810、TC4708、TC4208 等多种具有国内先进参数的行走、内爬式建筑机械产品。产品电气系统均采用西门子、施耐德等国内外先进优质的电气元件。质量稳定，性能可靠，维修率低，拆装方便。

公司全体职工本着“科技领先、规范管理、质量第一、顾客满意”的质量方针，向着“无事故、零缺陷”的质量目标而奋斗，汇友人将以勤奋努力的工作，高效率，高标准的履行自己的承诺，以优质价廉的产品和优良的服务伴您走上事业腾达之路。

“汇五湖四海，结天下朋友”，公司竭诚与广大有识之士密切合作，共谋大业，共创辉煌。



## JINAN HUIYOU CONSTRUCTION MACHINERY CO., LTD.

Jinan Huiyou Construction Machinery Co., Ltd. is a appointed construction machinery manufacturer, which is confirmed by General Administration of Quality Supervision, Inspection and Quarantine, and it is one member of the Shandong Construction Machinery Association, owning ISO9001:2000 and CE certifications.

The company is located in Zhangqiu, a place propitious for giving birth to great mean and beautiful scenery, which has the praise of "Small Spring City". It's next to the provincial capital Jinan-Spring City in the west, adjoins Zibo-the town of porcelain in the east, adjoins Jiaozhou-Jinan railway in the south and bordering on Jinan-Qingdao express-way in the north, Which makes it have convenient traffic and exceptionally gifted geographical position.

The company was established in 2002 with registered capital of RMB15 Million and total 600 workers, covering an area of 90000 square meters. The head office is located in Zhangqiu city owning two factories. One is in Zheshan Industrial Park and the other is in Mingshui Economic Development Area. We mainly produces "HYCM 汇友" brand: Construction hoist SC200/200, SC200, SC100/100, SC100; Luffing tower crane: D300, D160, D125; Topless tower crane: P7427, P7030, P6016, P5610, P5519, P5515, P5210, P5023, P5020, P5010, P4810; Topkit tower crane: TC7040, TC7030, TC6518, TC6515, TC6024, TC6018, TC6013, TC6010, TC5612, TC5610, TC5515, TC5513, TC5013, TC5011, TC5010, TC5008, TC4810, TC4708, TC4208 and the tower cranes can be design as traveling or internal climbing type with advanced parameters at home. The electrical system adopts electrical components of Siemens, Schneider and some other high quality advanced components at home and abroad. The products have the characteristics of stable quality, reliable performance, low rate of maintenance and easy installation/disassembly.

All the staff of the company are in line with the quality policy which is leading in the development of science and technology, management of standardizing, quality first, customer satisfaction and struggle towards quality goal that is no accident and zero defects. The people of HYCM will carry the promise into practice with high-standard, high efficiency, and diligent work, accompany with you to be on the way to great success with the high quality and reasonable price products and perfect service.

Gathering all corners of the land and making friends all over the world, the company will cooperate with the masses of knowledgeable people of all circles wholeheartedly, to connive the great cause and to create the resplendence.

HONOR, A MEDAL TO FOSTER THE TEAM

## 荣誉，团队铸造的勋章

砥砺奋发的汇友人，凝聚团队力量，用汗与泪，荣获一枚枚骄人的荣誉勋章，赢得客户的高度认可与赞誉，这是汇友无穷的财富，将鼓舞着汇友人继续前行……

Encourage the strenuous "HYCM" people and unite the team. With sweat and tear, winning impressive medals of honor one after another and gaining customers' recognition and praises are infinite wealth for HYCM and motivation for the "HYCM" people to keep on advancing.



## HISTORY, A SPLENDID PAST



## 历程，一路风光无限

十余年四季轮回，四千多个日夜风雨兼程，回首汇友走过的路，有泥泞坎坷，亦有无限风光。

Looking back, during ten years of continual march of the seasons and more than four thousand days of wind and rain, the road HYCM has traveled is sometimes bumpy, yet sometimes bright.

- 2002年2月7日“济南汇友建工机械有限公司”成立  
On February 7, 2002, Jinan Huiyou Construction Machinery Co., Ltd. (also called HYCM) was founded.
- 2003年取得了国家质检总局颁发的《特种设备制造许可证》  
In 2003, HYCM obtained the Certificate of Special Equipment Service Registration issued by the AQSIQ.
- 2004年末公司扩建规划总占地面积3万多平方米的制造新区  
At the end of 2004, HYCM expanded the manufacturing new area which was originally planned to cover an area of more than 30 thousand square meters.
- 2005年公司整体搬迁至赭山工业园制造新区  
In 2005, the whole company moved to the manufacturing new area in Zheshan Industrial Park.
- 2006年公司加入山东省建设机械行业协会，产品通过山东省建设厅备案  
In 2006, HYCM joined Shandong Province Construction Machinery Association and its products began to be put on records by Shandong Construction Department.
- 2007年特种设备制造许可塔式起重机升级为B级资质，取得特种设备安装改造维修许可B级资质  
In 2007, tower crane of the Certificate of Special Equipment Service Registration was upgraded to Qualification B, and HYCM obtained Qualification B of Installation, Alteration, Repair and Maintenance License of Special Equipment.
- 2008年获得济南市工商行政管理局颁发的“守合同、重信用企业”证书  
In 2008, HYCM was awarded the Certificate of "Following Contract and Observing Credit Enterprise" by Jinan Administration for Industry and Commerce.
- 2008年6月取得国际贸易自主进出口权  
In June, 2008, HYCM gained the right of autonomous import and export in international trade.
- 2008年10月，公司与金蓝盟企业管理集团签订终身会员合作（协议），全面提升企业管理水平和员工素质  
In October, 2008, HYCM concluded and signed the lifetime membership cooperation (agreement) with JLM Business Administration Management Group to improve business administration capacity and staff's quality as a whole.
- 2008年12月成功研制动臂D125塔机  
In December, 2008, HYCM succeeded in developing D125 luffing jib tower cranes.
- 2009年取得了“CE”认证  
In 2009, HYCM obtained the Certificate of Conformite Europeenne.

- 2010年取得了国家商标局颁发的“HYCM”牌商标  
In 2010, HYCM acquired the trademark of "HYCM" brand issued by State Trademark Bureau.
- 2010年成功研制P125平头塔机  
In 2010, HYCM succeeded in developing P125 flat-headed tower cranes.
- 2010年7月汇友公司唐山租赁分公司成立  
In July, 2010, Tangshan Leasing Branch of HYCM was founded.
- 2011年7月公司在章丘经济开发区双山北路5181号置地50000平方米  
In July, 2011, HYCM bought a piece of land covering an area of 50,000 m<sup>2</sup> in No. 5181, Shuangshan North Road, Zhangqiu Economic Development Zone.
- 2011年当选为章丘塔机协会副会长单位  
In 2011, HYCM was elected to be the vice-chairman unit of Zhangqiu Tower Crane Association.
- 2011年11月国家特种设备检验检疫总局各位专家对我公司第二制造厂区“起重机械制造、增加制造场地A级许可”通过了现场鉴定与评审  
In November, 2011, experts from General Administration of Special Equipments Inspection and Quarantine of the People's Republic of China launched field identification and evaluation of Level A of Crane Manufacture and Manufacture Sites Increase License of HYCM's No.2 Manufacturing Plant.
- 2011年12月公司第二厂区成功研制P5515、P5210、P5010等型号的平头塔机  
In December, 2011, No. 2 Manufacturing Plant of HYCM succeeded in researching and developing P5515, P5210 and P5010 flat-headed tower cranes.
- 2012年6月公司斥巨资成立全自动喷涂车间  
In June, 2012, HYCM spent heavily on establishing the full-automatic painting workshop.
- 2012年8月公司顺利通过山东省塔式起重机优质产品生产基地考核  
In August, 2012, HYCM successfully passed the assessment of Shandong Tower Crane Manufacturing Base of Quality Products.
- 2012年10月公司成功研制QTZ80内爬塔机  
In October, 2012, HYCM succeeded in researching and developing QTZ80 inner-climbing tower cranes.
- 2012年10月，中国传统文化瑰宝《弟子规》走进汇友文化  
In October, 2012, "Di Zi Gui" —the treasure of Chinese traditional culture — became part of HYCM's culture.
- 2012年11月公司取得了国家商标局颁发的“汇友HYCM”牌商标  
In November, 2012, HYCM acquired the trademark of "汇友 HYCM" brand issued by State Trademark Bureau.
- 2012年12月公司成功研制高空作业吊篮ZLP630型  
In December, 2012, HYCM succeeded in researching and developing ZLP630 Aerial Suspended Platform.
- 2013年4月，汇友公司西安营销分公司成立  
In April, 2013, Xi'an Marketing Branch of HYCM was founded.
- 2013年4月成功研制行走式平头125塔机  
In April, 2013, HYCM succeeded in researching and developing 125 mobile flat-headed tower cranes.

CULTURE, BUILDING THE DREAM LAND

## 文化，构筑梦想高地

天高，不如志高；城大，不如心大。  
汇友建机，以愿景的高度与文化的深度，构筑一座座属于汇友人的梦想高地。

A high sky is no better than a high ambition; a large city is no better than a great heart.  
Huiyou Construction Machinery——building the "HYCM" people's dream lands one after another with high aspirations and deep culture.

### 服务理念：

满足客户需求，超越客户期望  
用心沟通，用爱服务  
一切为了客户，为了一切客户，为了客户一切  
微笑多一点，效率高一点

### Service Philosophy:

Meet customer needs, exceed their expectations  
Communicate with heart, service with love  
All for customers, for all customers, for customers' all  
Smile more, higher efficiency

### 发展理念：

物竞天择，适者生存  
以市场为导向，以品质为保障  
丰富发展新理念，开创发展新局面  
小胜靠智，大赢在德

### Development Philosophy:

Survival of the fittest in natural selection  
Market oriented, quality guaranteed  
Enrich new ideas, break new ground  
Wisdom makes small victories, morality makes great triumphs

### 经营理念：

将顾客放在汇友心里  
把汇友建设在顾客心中  
顾客至尊，汇友至诚  
满足需要，追求卓越

### Management Philosophy:

Hold customers in the heart of HYCM  
Inscribe HYCM on customers' heart  
Customer foremost, sincerity first  
Meet customer needs, pursue excellence

### 质量理念：

以顾客满意为宗旨  
以持续改进为手段  
同行业最高标准，汇友的最低要求  
市场是检验产品质量的最终标准

### Quality Philosophy:

Set customer satisfaction as the aim  
Set continuous improvement as the measure  
Regard the highest standard in the industry as the lowest standard of HYCM  
Regard the market as the ultimate standard of product quality examination

### 共存理念：

厂兴我荣，厂衰我耻  
人人为企业，企业为人人  
员工靠企业生存  
企业靠员工振兴

### Coexisting Philosophy:

Proud of HYCM's prosperity, shamed by HYCM's decline  
All for the company, the company for all  
Employees rely on the company to survive  
The company relies on employees to flourish



## 弟子规，古为今用进汇友

《弟子规》原名《训蒙文》，为清康熙年间秀才李毓秀所作，其内容采用《论语》“学而篇”第六条的文义，列述弟子在家、出外、待人、接物与学习等方面应具有的礼仪规范。《弟子规》共 360 句，1080 个字，以三字一句，两句一韵的形式进行论述；全篇先为“总叙”，然后分为“入则孝、出则悌、谨、信、泛爱众、亲仁、余力学文”七个部分。

2012 年 10 月，中国传统文化瑰宝《弟子规》走进汇友文化，并在汇友引起强烈反响，影响并完善着汇友企业文化。《弟子规》讲的是人的行为准则，虽然是生活中的细微之处，但恰恰是一个人成就事业的关键。《弟子规》以“孝”作为开篇，一个人只有懂得了孝悌，有一颗善良仁慈的心，在工作中才会忠于职守，尊重领导并与人为善。“置冠服，有定位，勿乱顿，致污秽”，即衣冠与制度，它要求员工规范工作环境，物品摆放整齐有序，培养良好的工作习惯。“凡出言，信为先”，即言语与诚信，企业只有对员工与客户讲诚信，才能走的更远。

《弟子规》让汇友员工获益匪浅，人与人之间的关系变得更为和谐，提升了个人品质素养；面对利益的诱惑，首先为企业着想，整个公司的凝聚力、向心力增强。《弟子规》通篇讲求以人为本，这与汇友文化的共存理念不谋而合，公司上下形成一种良好的秩序，大家自我约束，互谦互让，公平竞争，效率提高。汇友不断践行着这些准则，而此次学习之后，传统文化的精髓深入到管理理念中，植根到员工的心中，形成坚不可摧的企业精神。

### "Di Zi Gui" (which means Standards for Being a Good Student and Child), making ancient culture serve HYCM's present.

With the original name of "Xun Meng Wen" (which means An Article on Teaching and Enlightening), "Di Zi Gui" was written by Yuxiu Lee, a Xiucai (one who passed the imperial examination at the county level) in the period of Kangxi, Qing dynasty. It adopts the thoughts and ideas expressed in "Chapter 6: Xue er" of "Lun Yu" (the analects of Confucius), and elaborated the required manners and standards for apprentices to stay at home, go out, get along with people, study, etc. The book consists of 360 sentences and 1080 words, with three words in a sentence and a rhythm in every two sentences. Beginning with the Introduction, it consists of seven chapters: At Home, Be Filial to Your Parents; Standards for a Younger Brother When Away from Home; Be Cautious in Your Daily Life; Be Trustworthy; Love All Equally; Be Close to and Learn from People of Virtue and Compassion; After All the Above Are Accomplished, Study Further and Learn.

In October, 2012, "Di Zi Gui"——the treasure of Chinese traditional culture——became part of HYCM's culture. It aroused intense reverberation, and was influencing and improving HYCM's corporate culture. The book tells the standard of human behaviors, which is about trivial things in daily life, yet is exactly the key to success in one's careers. In the first chapter: "Be Filial to Your Parents", only after understanding filial piety and having a loving and kind heart can one be devoted to his duty and be respectful and loving to his leaders in work. "Place your hat and clothes away in their proper places. Do not carelessly throw your clothes around, for that will get them dirty." This is about clothing and institution, which requires employees to regulate the work environment, place their personal articles in order and nurture good working habit. The sentence "When you speak, honesty is important" is about talks and honesty. Only being honest to its employees and clients, can HYCM be more successful in the future.

"Di Zi Gui" has greatly benefited staff members of HYCM, harmonized their interpersonal relationships and promoted their personal qualities. Facing the temptation of interests, they put HYCM as their priority, which enhanced the company's cohesion and centripetal force. From the very first word to the last one, the book tells about putting people first, which happens to be the same coexisting philosophy of HYCM's corporate culture. With a sound order in shape, employees at all levels are self-restraint, tolerant and modest with each other. And under fair competition, their work efficiency has increased by a large margin. HYCM continues to put this standard into practice and, with the essence of traditional culture deeply enshrined into its management philosophy as well as employees' heart after the study, it has formed an unbreakable corporate spirit.



STRENGTH, A GUARANTEE FOR HIGH QUALITY

## 实力，打造品质的保障

济南汇友建工机械有限公司精良的制造工艺来引进和自主研发的高科技制造设备。原材料是保障质量的要关，公司直接从大钢厂订单式批量采购，保障了原材料安全性能。

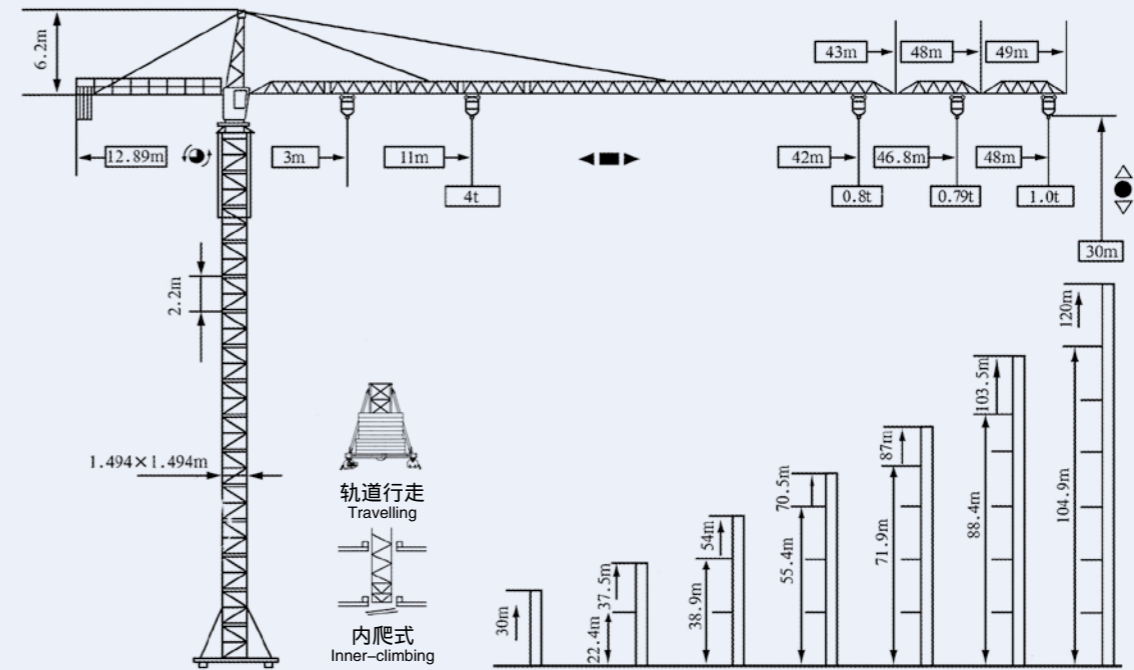
Jinan Huiyou Construction Machinery Co., Ltd. adopts excellent manufacturing techniques to introduce and independently develop high-tech manufacturing facilities. Raw materials are important link to ensure the quality. Through direct purchase and order of quantities from large-sized steel mills, the company insures the safety performance of raw materials.



大匠运斤，精诚作业  
EXQUISITE CRAFTSMANSHIP, SINCERE WORK

# TC4208/4708/4810

# 4T



起重量载荷表 Load Capacity

Topkit

Jib m	倍率 Fall	R(Cmax) m	C(max) t	14	18	22	26	30	34	38	42	46	46.8	48
48	IV	11	4	3.090	2.360	2.027	1.869	1.711	1.553	1.395	1.237	1.079	1.050	1
	II	20	2	2	2	2.027	1.869	1.711	1.553	1.395	1.237	1.079	1.050	1
46.8	IV	11	4	3.090	2.360	1.897	1.567	1.340	1.159	1.017	0.902	0.807	0.790	
	II	20	2	2	2	1.897	1.567	1.340	1.159	1.017	0.902	0.807	0.790	
42	IV	11	4	3.090	2.360	1.900	1.540	1.280	1.080	0.930	0.800			
	II	20	2	2	2	1.900	1.540	1.280	1.080	0.930	0.800			

机构特性 Mechanism Characteristics

起升 Hoisting	Motor(kW)	320m
m/min: 32.14/15.60/3.5 t: 2/4	65.14/32.57/7.0 1/2	15/15/4
变幅 Trolleying	m/min: 38.6/25.2	2.2/1.5
回转 Slewing	r/min: 0.70/0.35	3.7
顶升 Jacking-up	m/min: 0.4	4
电源 Power Supply	380V/50Hz	
供电容量 Power Capacity	24.9kW	

## 塔头式塔机 Topkit tower crane

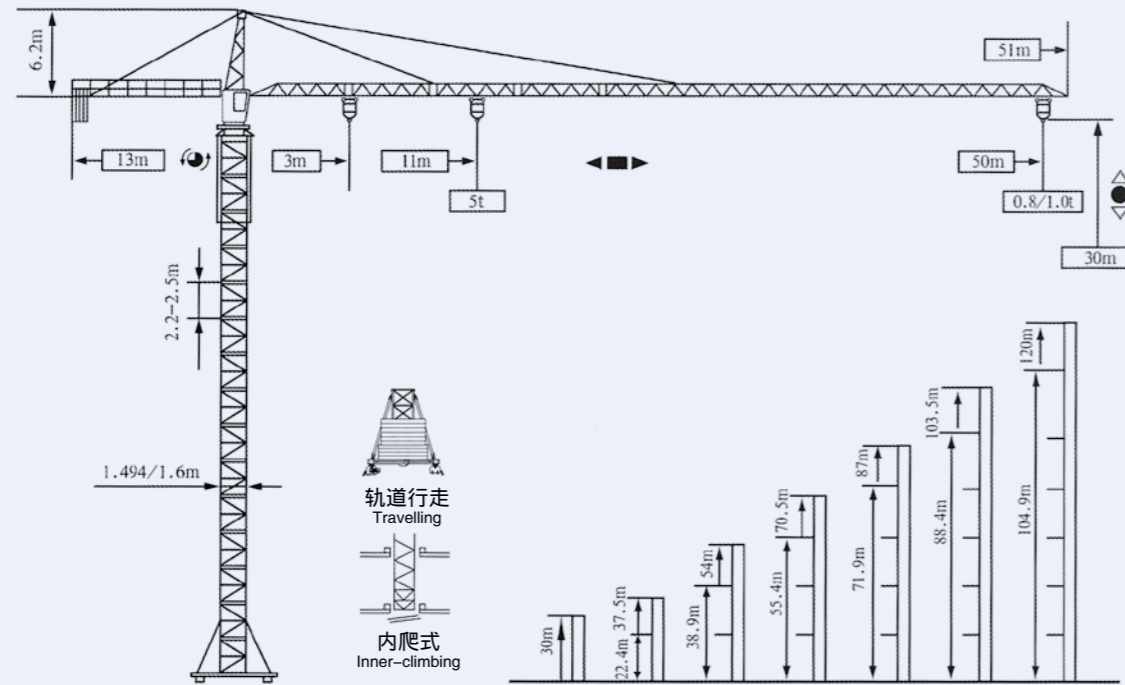
塔头式塔机适用于高层民用建筑、桥梁水利工程、大跨度工业厂房等。

Topkit tower crane is used for high-rise civil architecture, bridge and water conservancy projects, long span industrial factory buildings, etc.



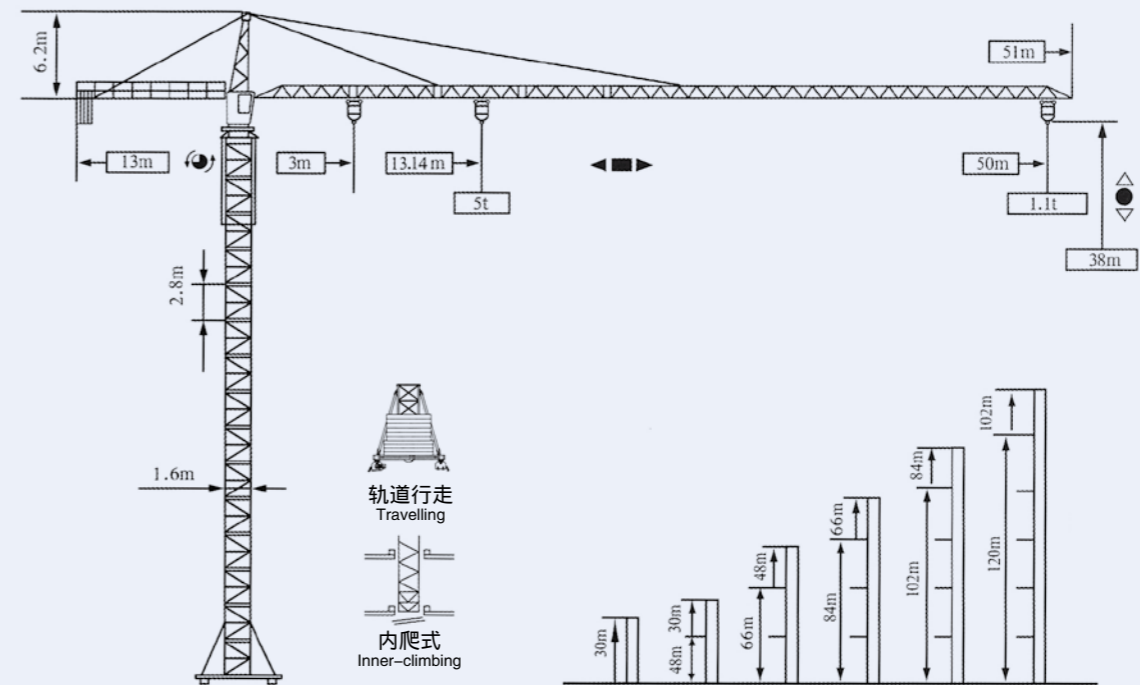
### TC5008/5010

5T



### TC5011

5T



起重量载荷表 Load Capacity

Jib m	倍率 Fall	R(Cmax) m	C(max) t	15	20	25	30	35	40	45	50
50	IV	11	5	3.40	2.18	1.68	1.396	1.177	1.013	0.885	0.80
	II	17.50	2.50	2.50	2.10	1.68	1.396	1.177	1.013	0.885	0.80
Jib m	倍率 Fall	R(Cmax) m	C(max) t	15	20	25	30	35	40	45	50
50	IV	11	5	4.08	2.272	1.923	1.667	1.471	1.190	1.086	1.026
	II	17.50	2.50	2.50	2.174	1.923	1.667	1.471	1.190	1.086	1

机构特性 Mechanism Characteristics

起升 Hoisting	速度	Motor(kW)
起升 Hoisting	m/min t	32.14/15.60/3.5 2/4 65.14/32.57/7.0 1/2 15/15/4 320m
变幅 Trolleying	m/min	38.6/25.2 2.2/1.5
回转 Slewing	r/min	0.70/0.35 3.7
顶升 Jacking-up	m/min	0.4 4
电源 Power Supply		380V/50Hz
供电容量 Power Capacity		24.9kW

Topkit

起重量载荷表 Load Capacity

Jib m	倍率 Fall	R(Cmax) m	C(max) t	15	20	25	30	35	40	45	50
50	IV	13.14	5.0	4.343	3.185	2.490	2.067	1.696	1.448	1.254	1.10
	II	24.91	2.50	2.50	2.500	2.490	2.067	1.696	1.448	1.254	1.10

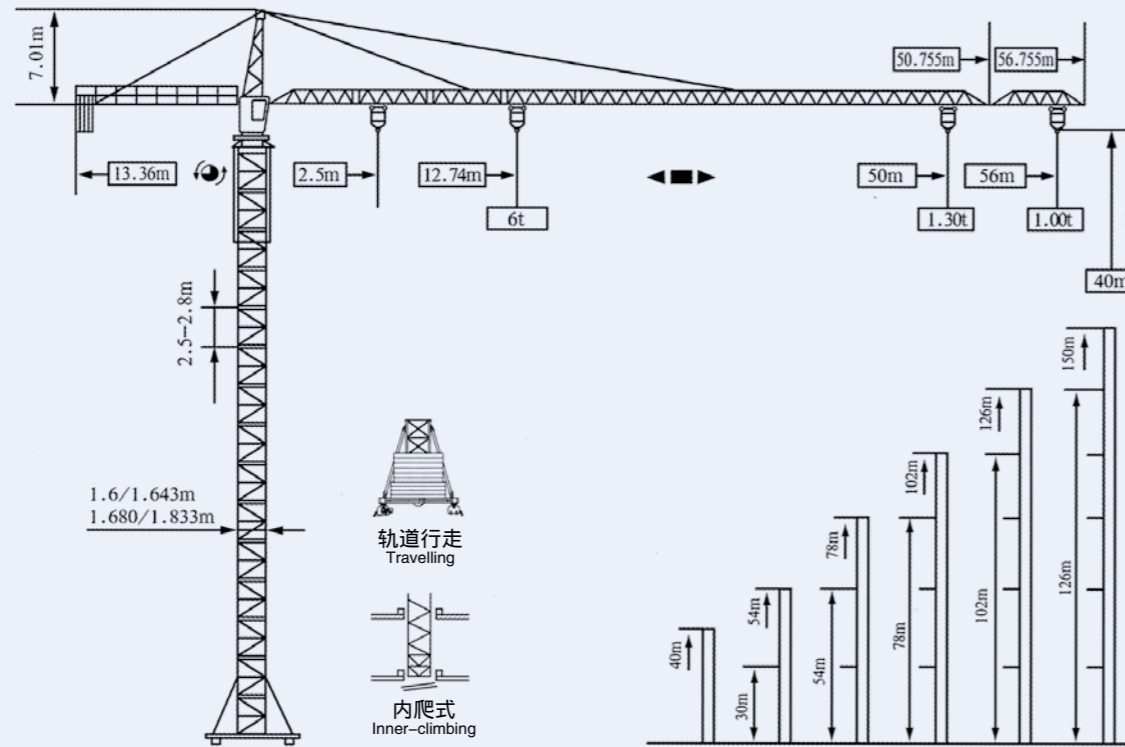
机构特性 Mechanism Characteristics

起升 Hoisting	速度	Motor(kW)
起升 Hoisting	m/min t	35/17.5/3.5 2/4 70/35/7.0 1/2 18/18/5 320m
变幅 Trolleying	m/min	38.6/25.2 2.2/1.5
回转 Slewing	r/min	0.70/0.35 3.7
顶升 Jacking-up	m/min	0.4 4
电源 Power Supply		380V/50Hz
供电容量 Power Capacity		24.9kW

Topkit

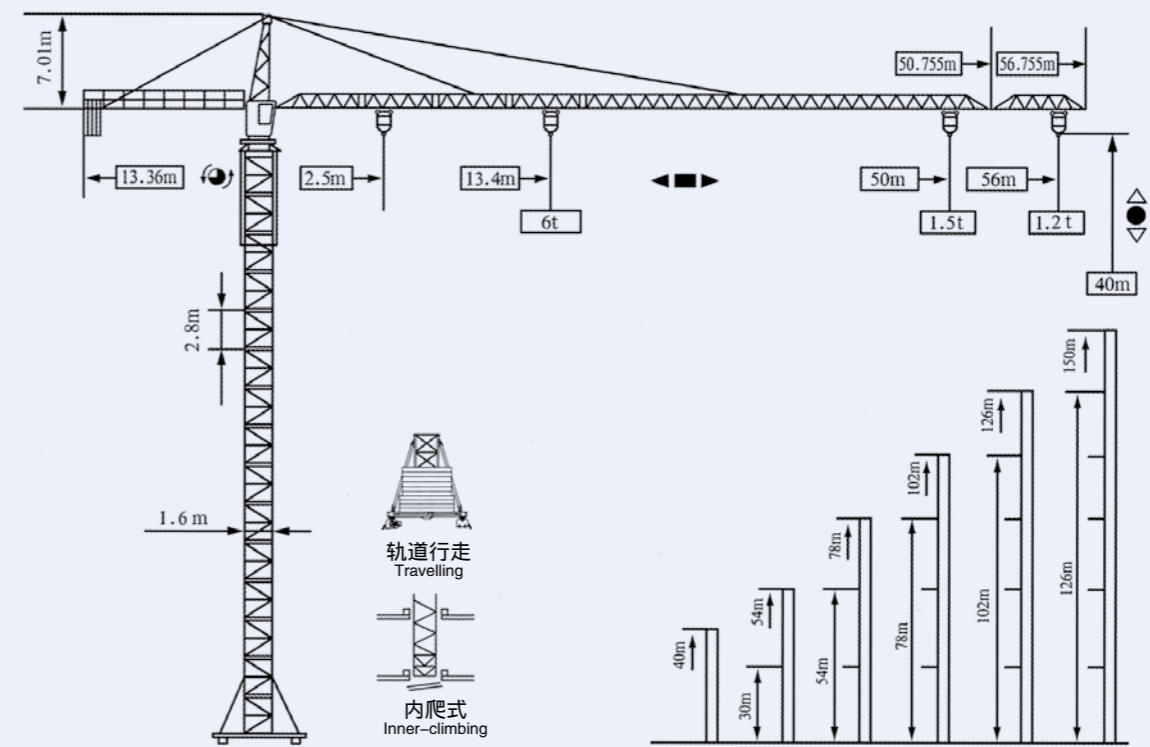
### TC5013/5610

### 6T



### TC5612

### 6T



起重载荷表 Load Capacity

Jib m	倍率 Fall	R(Cmax) m	C(max) t	14	18	22	26	30	34	38	42	46	50	52	54	56
56	IV	12.74	6	5.40	4.06	3.22	2.65	2.23	1.92	1.67	1.47	1.31	1.17	1.11	1.05	1
	II	24	3	3	3	3	2.65	2.23	1.92	1.67	1.47	1.31	1.17	1.11	1.05	1
50	IV	12.74	6	6	5.044	4.036	2.965	2.500	2.150	1.870	1.630	1.460	1.30			
	II	24	3	3	3	3	3	2.50	2.15	1.87	1.63	1.46	1.30			

机构特性 Mechanism Characteristics

起升 Hoisting	变幅 Trolleying	回转 Slewing	顶升 Jacking-up	电源 Power Supply	供电容量 Power Capacity
m/min t 40/20/4.25 3/6 80/40/8.5 1.5/3 Motor(kW) 24/24/5.4 400m	m/min 20/40 3.2/2.2	r/min 0.6 2 × 3.7	m/min 0.4 5.5	380V/50Hz	34.8kW

起重载荷表 Load Capacity

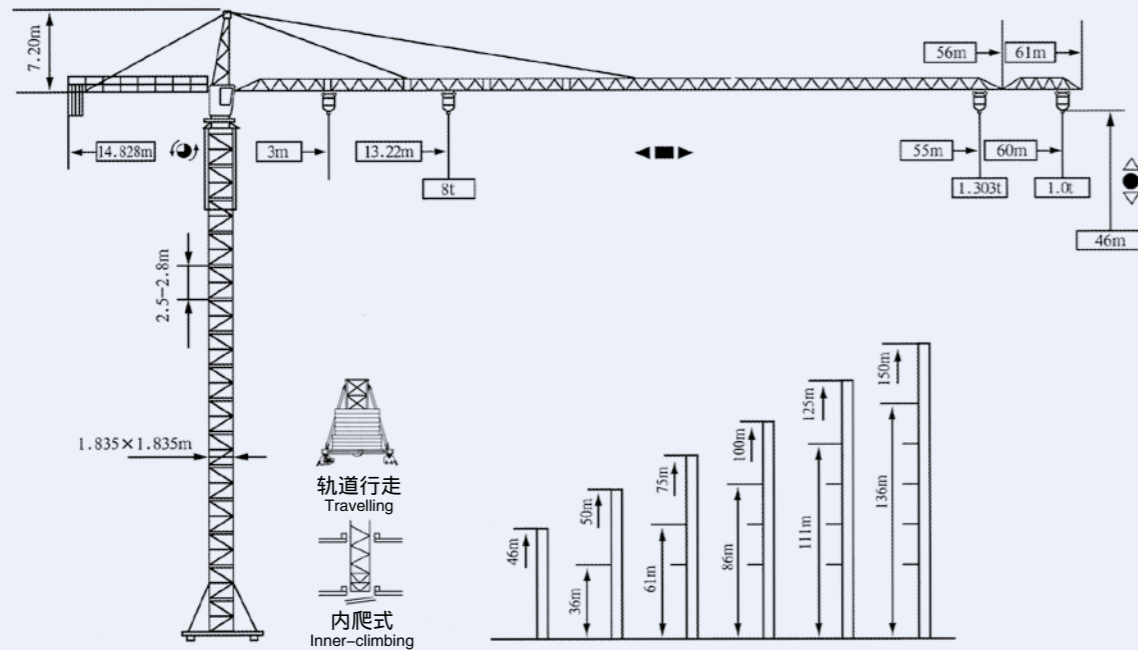
Jib m	倍率 Fall	R(Cmax) m	C(max) t	16	18	22	26	30	34	38	42	46	50	52	54	56
56	IV	13.4	6	5.80	5.08	4.04	3.32	2.79	2.39	2.07	1.81	1.60	1.42	1.34	1.26	1.2
	II	25.5	3	3	3	3	3.32	2.79	2.39	2.07	1.81	1.60	1.42	1.34	1.26	1.2
50	IV	13.4	6	6	5.58	4.45	3.67	3.0	2.65	2.31	2.03	1.79	1.50			
	II	25.5	3	3	3	3	3	3.0	2.65	2.31	2.03	1.79	1.50			

机构特性 Mechanism Characteristics

起升 Hoisting	变幅 Trolleying	回转 Slewing	顶升 Jacking-up	电源 Power Supply	供电容量 Power Capacity
m/min t 40/20/4.25 3/6 80/40/8.5 1.5/3 Motor(kW) 24/24/5.4 400m	m/min 20/40 3.2/2.2	r/min 0.6 2 × 3.7	m/min 0.4 5.5	380V/50Hz	34.8kW

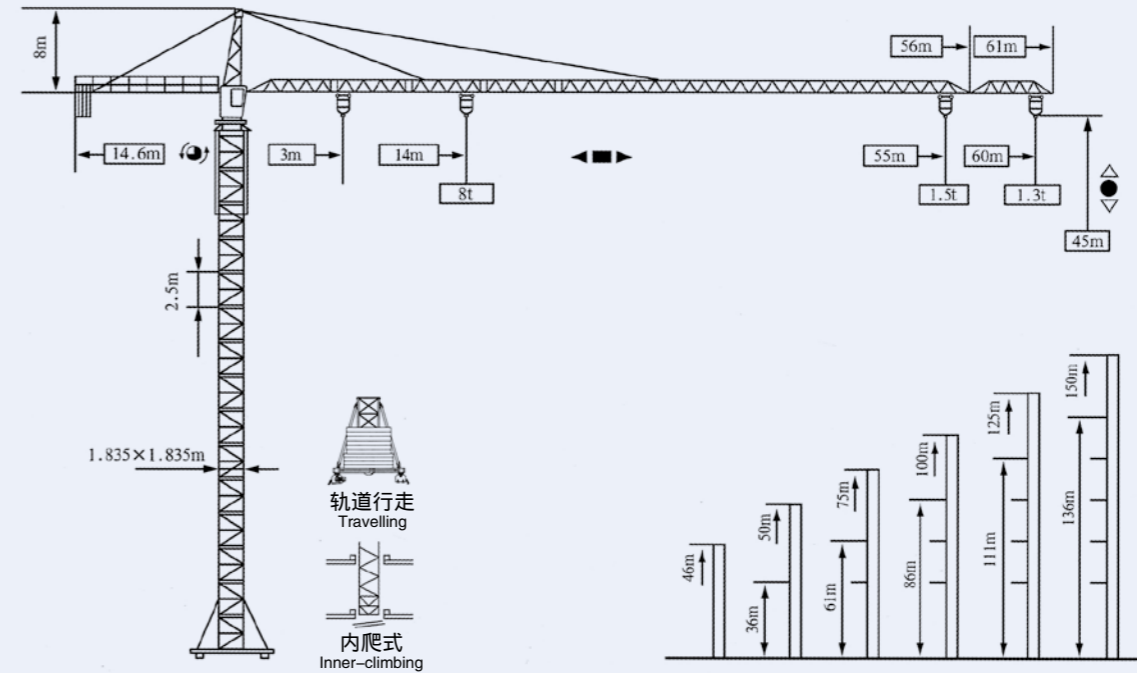
### TC5513/6010

8T



### TC5515/6013

8T



起重量载荷表 Load Capacity

Jib m	倍率 Fall	R(Cmax) m	C(max) t	16	20	24	28	32	36	40	44	48	52	54	55	56	58	60
60	IV	13.22	8	6.469	5.012	4.04	3.346	2.826	2.421	2.098	1.833	1.612	1.425	1.342	1.303	1.205	1.106	1
	II	24	4	4	4	4	3.346	2.826	2.421	2.098	1.833	1.612	1.425	1.342	1.303	1.205	1.106	1
55	IV	13.22	8	6.469	5.012	4.04	3.346	2.826	2.421	2.098	1.833	1.612	1.425	1.342	1.303			
	II	24	4	4	4	4	3.346	2.826	2.421	2.098	1.833	1.612	1.425	1.342	1.303			

机构特性 Mechanism Characteristics

起升 Hoisting	速度 m/min	40/20/4.25	80/40/8.5	Motor(kW)	400m
变幅 Trolleying	m/min	40/20	3.3/2.2		
回转 Slewing	r/min	0.6	2 x 3.7		
顶升 Jacking-up	m/min	0.4	5.5		
电源 Power Supply	380V/50Hz				
供电容量 Power Capacity	46.2kW				

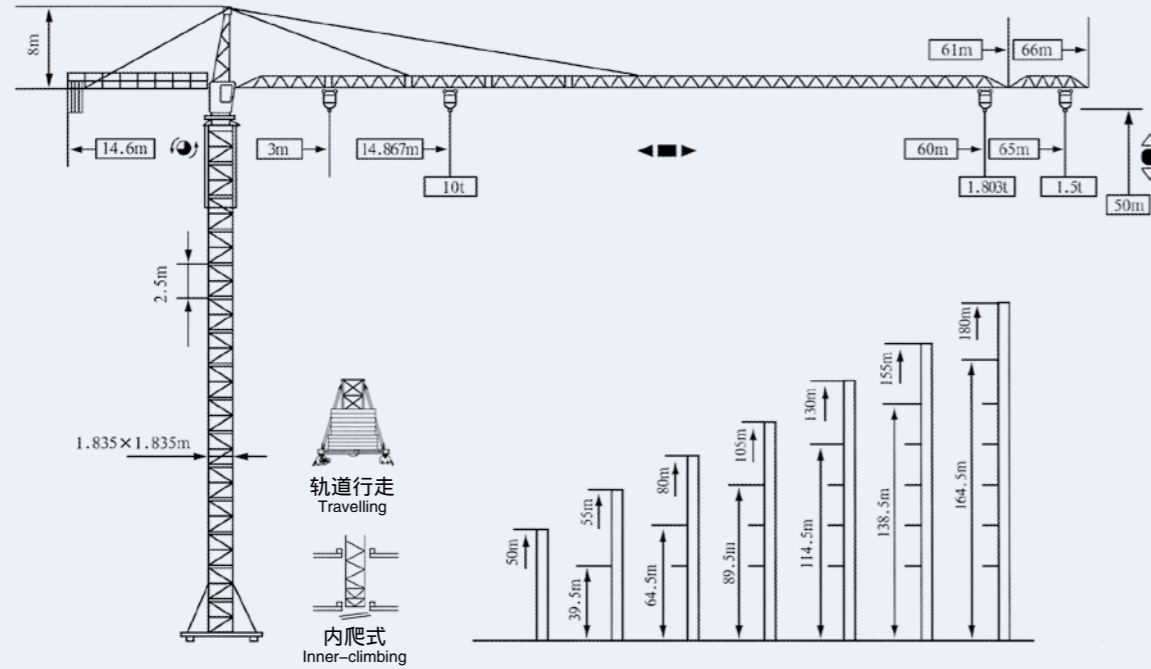
起重量载荷表 Load Capacity

Jib m	倍率 Fall	R(Cmax) m	C(max) t	18	22	26	30	34	38	42	46	50	54	55	56	58	60
60	IV	14	8	5.99	4.73	3.88	3.26	2.80	2.43	2.13	1.89	1.69	1.52	1.48	1.44	1.37	1.30
	II	24	4	4	4	3.90	3.28	2.82	2.45	2.15	1.91	1.71	1.54	1.46	1.42	1.39	1.32
55	IV	14	8	6.07	4.80	3.93	3.31	2.84	2.46	2.17	1.92	1.71	1.54	1.50			
	II	24	4	4	4	3.95	3.33	2.86	2.48	2.19	1.94	1.73	1.56	1.52			

机构特性 Mechanism Characteristics

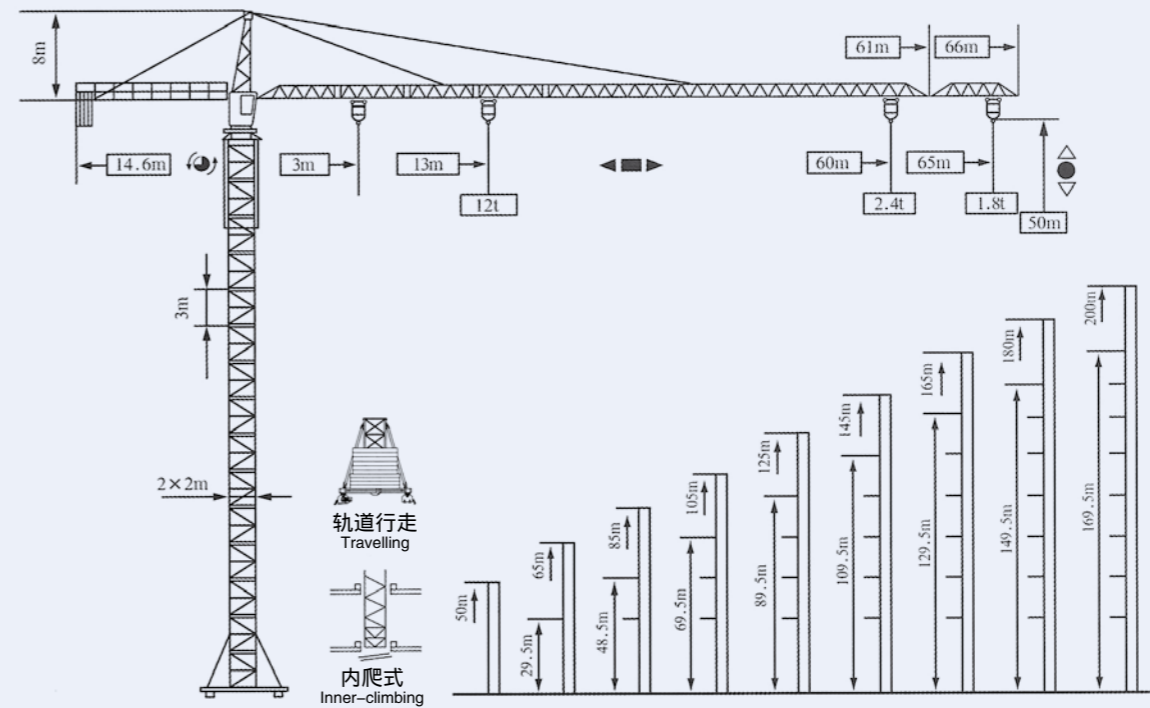
起升 Hoisting	速度 m/min	40/20/4.25	80/40/8.5	Motor(kW)	420m
变幅 Trolleying	m/min	40/20	3.3/2.2		
回转 Slewing	r/min	0.6	2 x 3.7		
顶升 Jacking-up	m/min	0.4	5.5		
电源 Power Supply	380V/50Hz				
供电容量 Power Capacity	46.2kW				

### TC6018/6515 10T



### 10T

### TC6024/6518 12T



### 12T

Topkit

起重量载荷表 Load Capacity

Jib m	倍率 Fall	R(Cmax) m	C(max) t	15	20	25	30	35	40	45	50	55	60	65
65	IV	14.867	10	9.903	7.192	5.565	4.480	3.706	3.125	2.673	2.311	2.015	1.769	1.478
	II	27.155	5	5	5	5	4.446	3.691	3.125	2.684	2.332	2.043	1.803	1.500
60	IV	14.867	10	9.903	7.192	5.565	4.480	3.706	3.125	2.673	2.311	2.015	1.769	
	II	27.155	5	5	5	5	4.446	3.691	3.125	2.684	2.332	2.043	1.803	

机构特性 Mechanism Characteristics

起升 Hoisting	速度 m/min	速度 t	Motor(kW)
变幅 Trolleying	60/30/9	5/3.7/1.1	500m
回转 Slewing	0.6	2 × 5	
顶升 Jacking-up	0.4	7.5	
电源 Power Supply	380V/50Hz		
供电容量 Power Capacity	59.5kW		

Topkit

起重量载荷表 Load Capacity

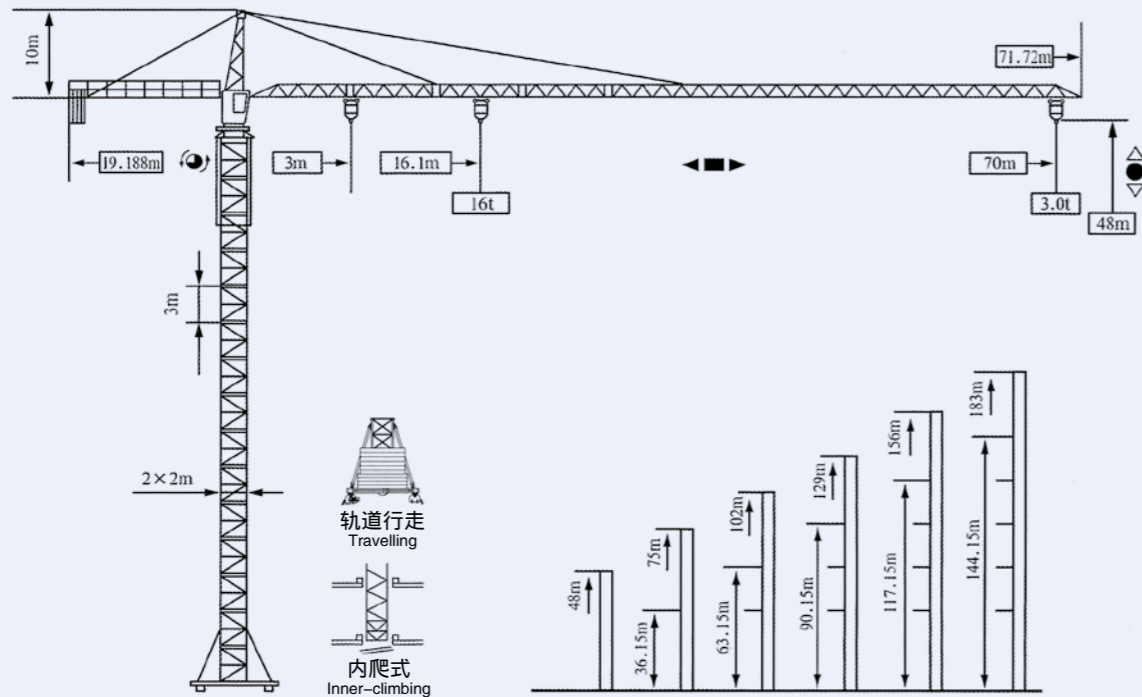
Jib m	倍率 Fall	R(Cmax) m	C(max) t	15	20	25	30	35	40	45	50	55	60	65
65	IV	13	12	10.21	7.92	6.149	4.968	4.125	3.492	3	2.606	2.284	2.016	1.789
	II	26	6	6	6	6	4.198	4.096	3.48	3	2.66	2.303	2.041	1.82
60	IV	15	12	12	8.53	6.60	5.31	4.415	3.69	3.175	2.76	2.555	2.35	
	II	26	6	6	6	6	5.31	4.415	3.74	3.175	2.81	2.56	2.40	

机构特性 Mechanism Characteristics

起升 Hoisting	速度 m/min	速度 t	Motor(kW)
变幅 Trolleying	60/30/9	5/3.7/1.1	500m
回转 Slewing	0-0.6	2 × 5	
顶升 Jacking-up	0.5	7.5	
电源 Power Supply	380V/50Hz		
供电容量 Power Capacity	59.5kW		

### TC7030

### 16T



Topkit

起重载荷表 Load Capacity

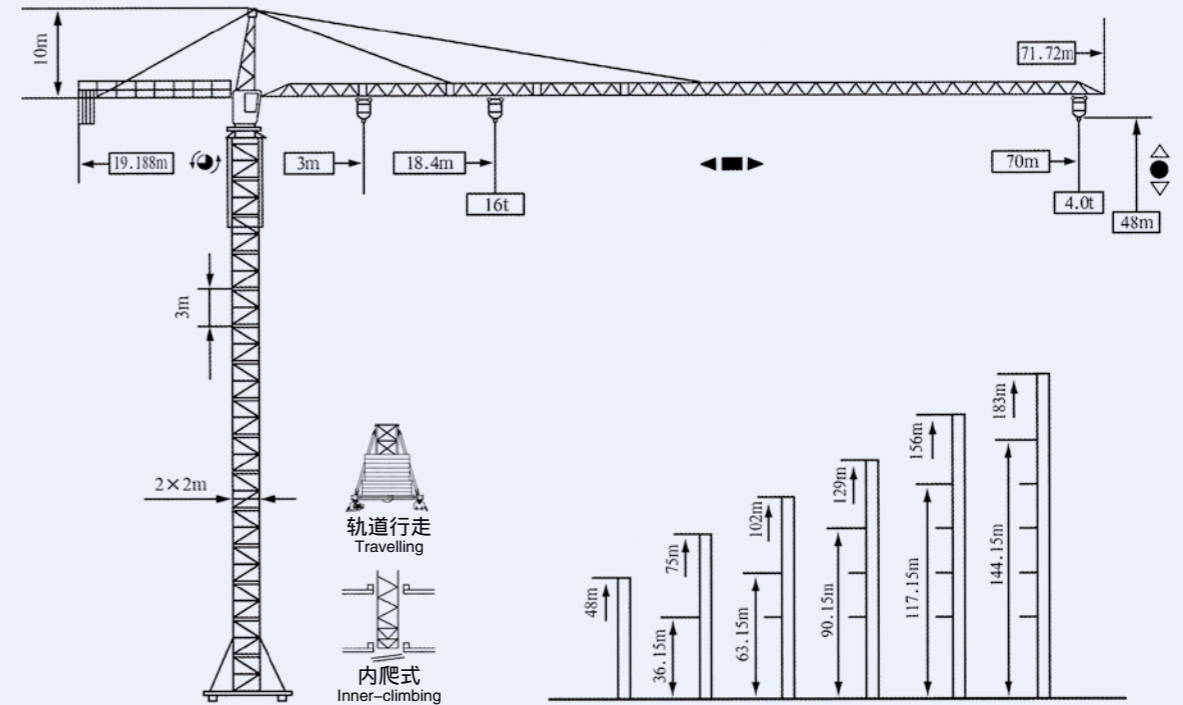
Jib m	倍率 Fall	R(Cmax) m	C(max) t	20	25	30	35	40	45	50	55	60	65	70
70	IV	16.10	16	12.568	9.723	7.827	6.473	5.457	4.667	4.035	3.517	3.086	2.722	2.409
	II	31	8	8	8	8	6.983	5.993	5.222	4.606	4.102	3.681	3.326	3.021

机构特性 Mechanism Characteristics

起升 Hoisting	速度 m/min	倍率	Motor(kW)
起升 Hoisting	15/30	16/8	51.5
变幅 Trolleying	60/30/9	5/3.7/1.1	
回转 Slewing	0.6	2 × 5	
顶升 Jacking-up	0.4	11	
电源 Power Supply	380V/50Hz		
供电容量 Power Capacity	77.5kW		

### TC7040

### 16T



Topkit

起重载荷表 Load Capacity

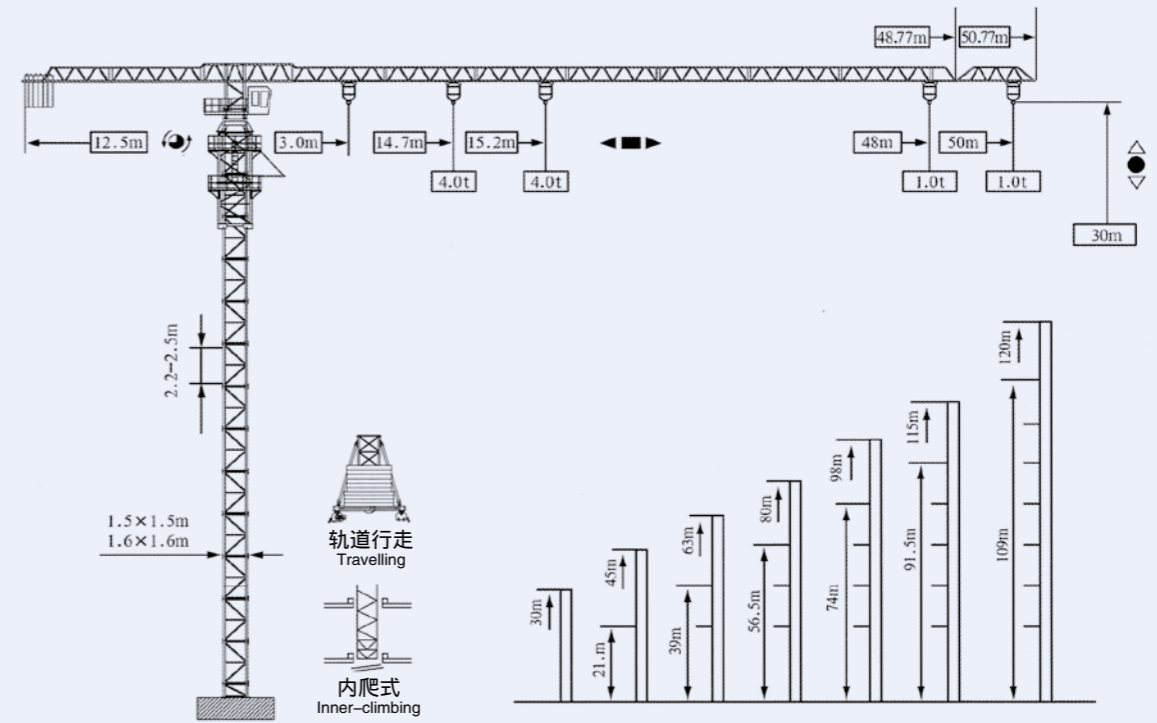
Jib m	倍率 Fall	R(Cmax) m	C(max) t	20	25	30	35	40	45	50	55	60	65	70
70	IV	18.40	16.00	14.72	11.776	9.813	8	6.85	5.98	5.12	4.54	4.107	3.791	3.52
	II	35	8	8	8	8	8	7	6.222	5.60	5.091	4.666	4.308	4

机构特性 Mechanism Characteristics

起升 Hoisting	速度 m/min	倍率	Motor(kW)
起升 Hoisting	15/30	16/8	51.5
变幅 Trolleying	60/30/9	5/3.7/1.1	
回转 Slewing	0.6	2 × 5	
顶升 Jacking-up	0.4	11	
电源 Power Supply	380V/50Hz		
供电容量 Power Capacity	77.5kW		

# P4810/5010

# 4T



### Topless

起重量载荷表 Load Capacity

Jib m	倍率 Fall	R(Cmax) m	C(max) t	20	25	30	35	40	45	48	50
48	IV	14.7	4	2.858	2.221	1.796	1.493	1.266	1.009	1	
	II	27.4	2	2	2	1.796	1.493	1.266	1.089	1	
50	IV	15.2	4	2.98	2.32	1.88	1.566	1.330	1.147	1.055	1
	II	28.4	2	2	2	1.88	1.566	1.330	1.147	1.055	1

机构特性 Mechanism Characteristics

起升 Hoisting	变幅 Trolleying	回转 Slewing	顶升 Jacking-up	电源 Power Supply	供电容量 Power Capacity
m/min: 32/16/3.5 t: 2/4 Motor(kW): 15/15/4 320m	m/min: 25.2/38.6	r/min: 0.7/0.35	m/min: 0.4	380V/50Hz	24.9kW

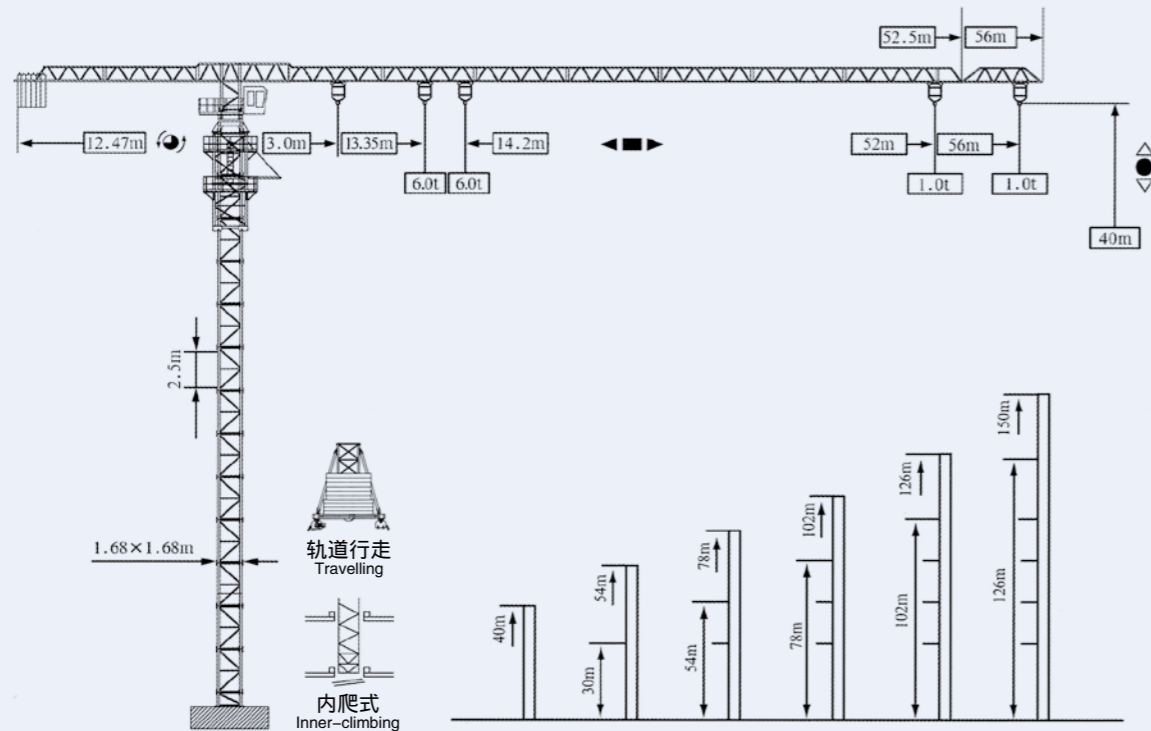


## 平头式塔机 Topless tower crane

平头式塔机适用于群吊交叉作业，具有快速安拆的特点。  
Topless tower crane applies to cross operations, featuring quick installation and removal.

### P5210/5610

### 6T



Topless

起重载荷表 Load Capacity

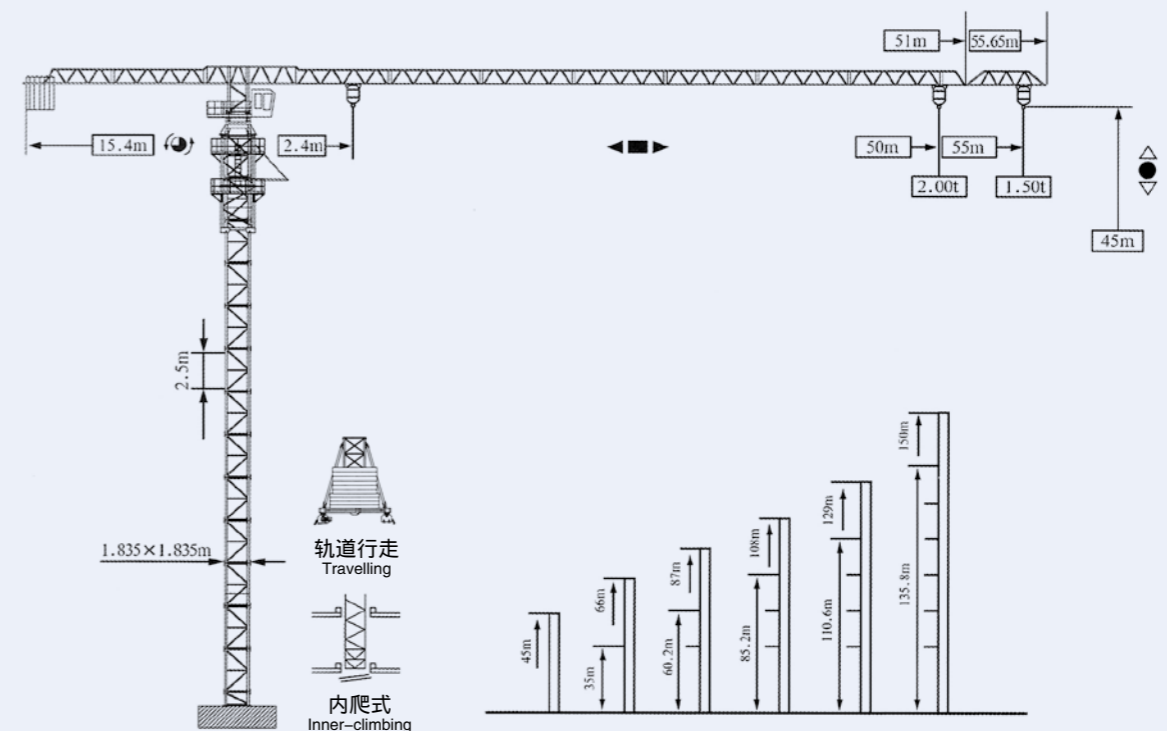
Jib m	倍率 Fall	R(Cmax) m	C(max) t	15	20	25	30	35	40	45	50	52	56
52	IV	13.35	6	5.61	3.94	2.95	2.31	1.85	1.51	1.25	1.04	0.95	
	II	24.94	3	3	3	2.99	2.35	1.90	1.56	1.30	1.09	1	
56	IV	14.20	6	5.43	3.94	2.97	2.37	1.93	1.60	1.35	1.15	1.08	0.95
	II	24.94	3	3	3	3.03	2.42	1.98	1.65	1.40	1.20	1.13	1

机构特性 Mechanism Characteristics

起升 Hoisting	速度 m/min	40/20/4.25	80/40/8.5	Motor(kW)	400m
变幅 Trolleying	m/min	40/20		3.2/2.2	
回转 Slewing	r/min	0.6		3.7 × 2	
顶升 Jacking-up	m/min	0.4		5.5	
电源 Power Supply	380V/50Hz				
供电容量 Power Capacity	34.8kW				

### P5020/5515

### 8T



Topless

起重载荷表 Load Capacity

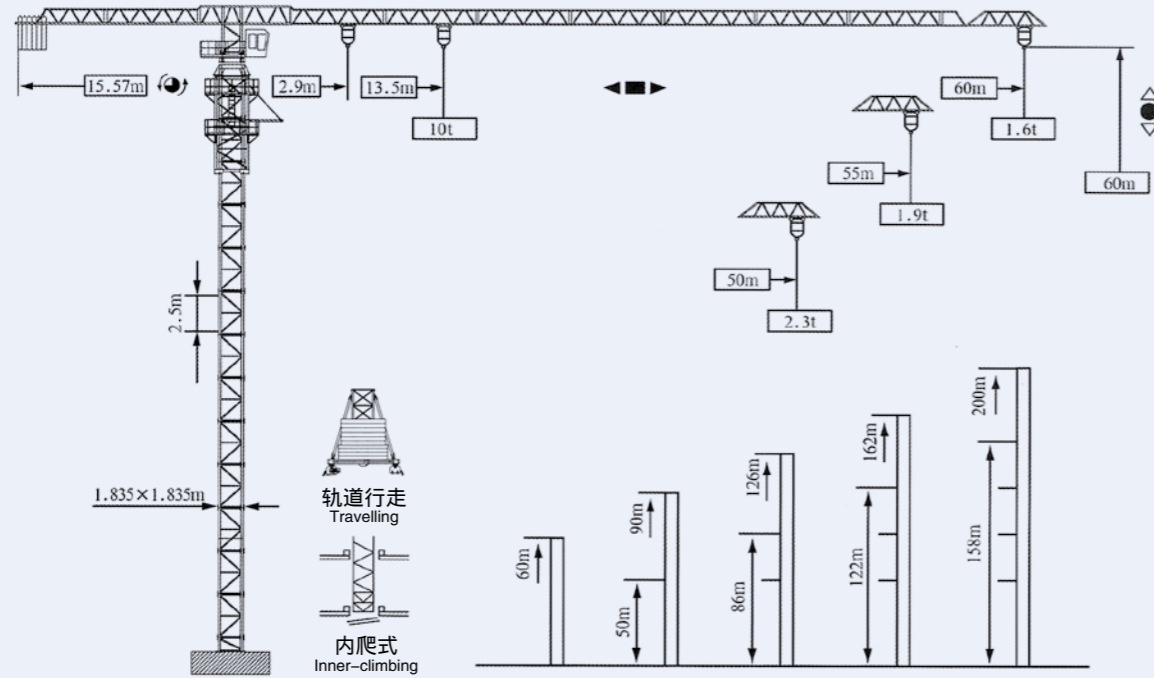
Jib m	倍率 Fall	R(Cmax) m	C(max) t	25	30	35	40	45	50	55
55	IV	13.34	8	3.85	3.10	2.65	2.15	1.90	1.60	1.35
	II	25.03	4	4	3.25	2.80	2.30	2.05	1.75	1.50
50	IV	14.69	8	4.36	3.50	3	2.47	2.18	1.85	
	II	27.67	4	4	3.65	3.15	2.62	2.33	2	

机构特性 Mechanism Characteristics

起升 Hoisting	速度 m/min	40/20/4.25	80/40/8.5	Motor(kW)	400m
变幅 Trolleying	m/min	40/20		3.3/2.2	
回转 Slewing	r/min	0.6		3.7 × 2	
顶升 Jacking-up	m/min	0.4		5.5	
电源 Power Supply	380V/50Hz				
供电容量 Power Capacity	46.2kW				

### P5023/5519/6016

### 10T



Topless

起重量载荷表 Load Capacity

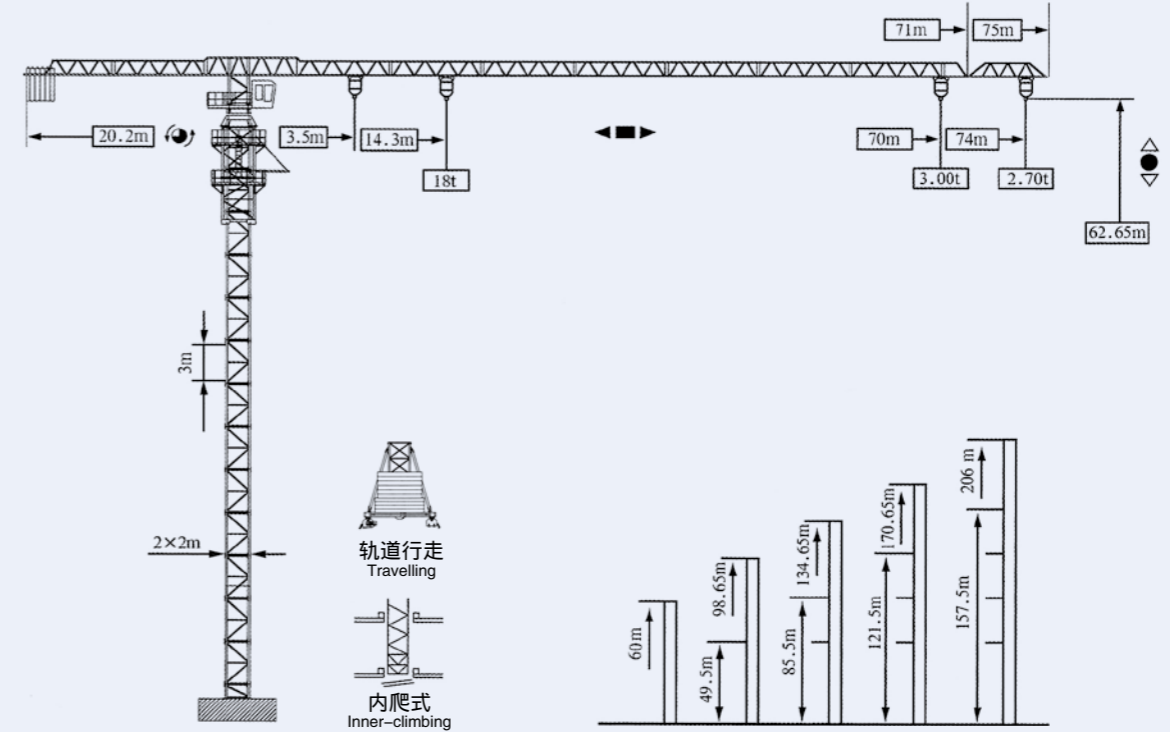
Jib m	倍率 Fall	R(Cmax) m	C(max) t	25	30	35	40	45	50	55	60
60	IV	13.5	10	5.011	4.030	3.33	2.81	2.41	2.08	1.82	1.60
	II	25	5	5	4.030	3.33	2.81	2.41	2.08	1.82	1.60
55	IV	13.8	10	5.18	4.17	3.46	2.92	2.50	2.17	1.90	
	II	25.7	5	5	4.17	3.46	2.92	2.50	2.17	1.90	
50	IV	14.4	10	5.44	4.38	3.64	3.08	2.64	2.30		
	II	26.8	5	5	4.38	3.64	3.08	2.64	2.30		

机构特性 Mechanism Characteristics

起升 Hoisting	速度 m/min	卷筒直径	钢丝绳规格	电动机 Motor(kW)	行程
起升 Hoisting	53/27/16	φ100	105/55/33	37/37	500m
变幅 Trolleying	60/30/9	φ100	2.5/5	5/3.7/1.1	
回转 Slewing	0.6	φ100	2 × 5		
顶升 Jacking-up	0.4	φ100	7.5		
电源 Power Supply	380V/50Hz				
供电容量 Power Capacity	59.5kW				

### P7030/7427

### 18T



Topless

起重量载荷表 Load Capacity

Jib m	倍率 Fall	R(Cmax) m	C(max) t	30	34	40	44	50	54	60	64	70	74
74	IV	14.3	18	7.01	6.16	5.05	4.48	3.80	3.43	2.98	2.72	2.39	2.20
	II	25.9	9	7.66	6.66	5.55	4.98	4.30	3.93	3.48	3.22	2.89	2.70
70	IV	14.6	18	7.42	6.39	5.25	4.66	3.96	3.58	3.11	2.84	2.50	
	II	26.7	9	7.92	6.89	5.75	5.16	4.46	4.08	3.61	3.34	3	

机构特性 Mechanism Characteristics

起升 Hoisting	速度 m/min	卷筒直径	钢丝绳规格	电动机 Motor(kW)	行程
起升 Hoisting	34/58/92	φ100	17/29/46	55	550m
变幅 Trolleying	60/30/9	φ100	18/9	5/3.7/1.1	
回转 Slewing	0.6	φ100	2 × 5		
顶升 Jacking-up	0.4	φ100	11		
电源 Power Supply	380V/50Hz				
供电容量 Power Capacity	81kW				



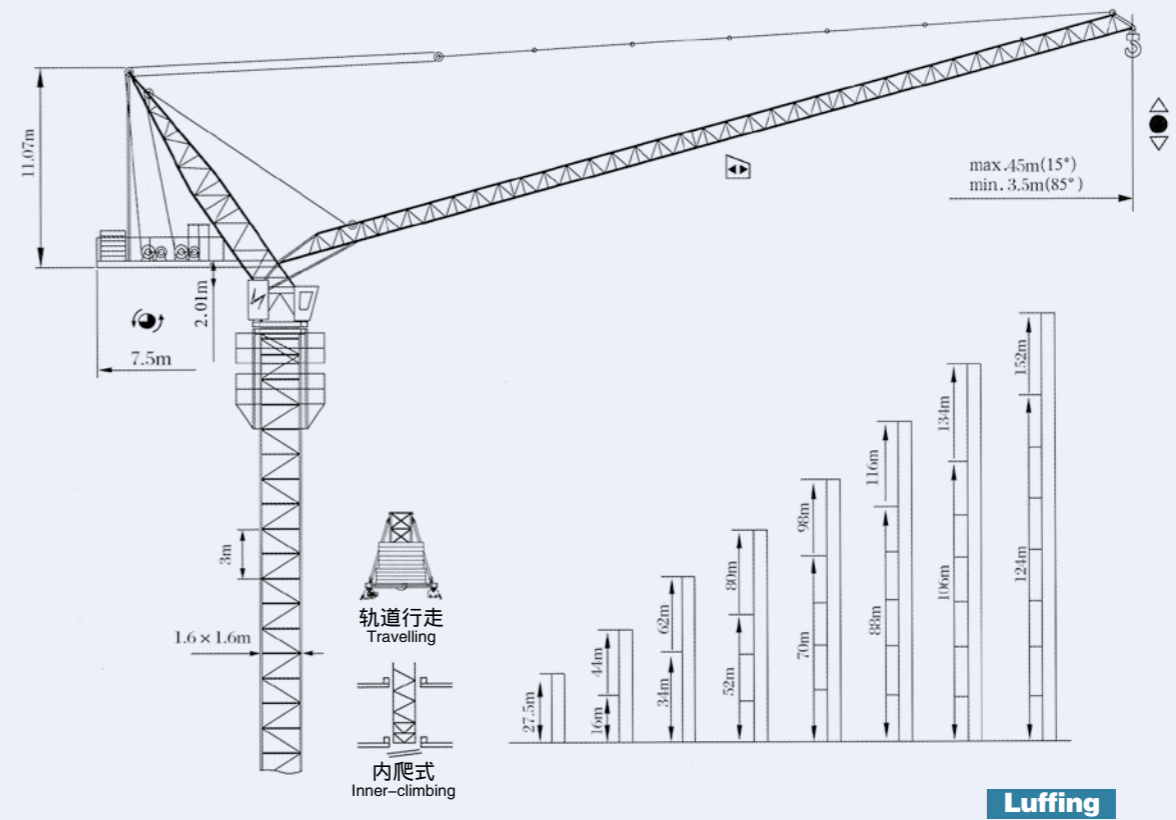


**动臂式塔机 Luffing jib tower crane**

动臂式塔机适用于建筑工地面积较小的高层或超高层建筑。  
Luffing jib tower crane applies to high-rise or super high-rise buildings with relatively small area of construction site.

# D120

# 6T



**Luffing**

起重载荷表 Load Capacity

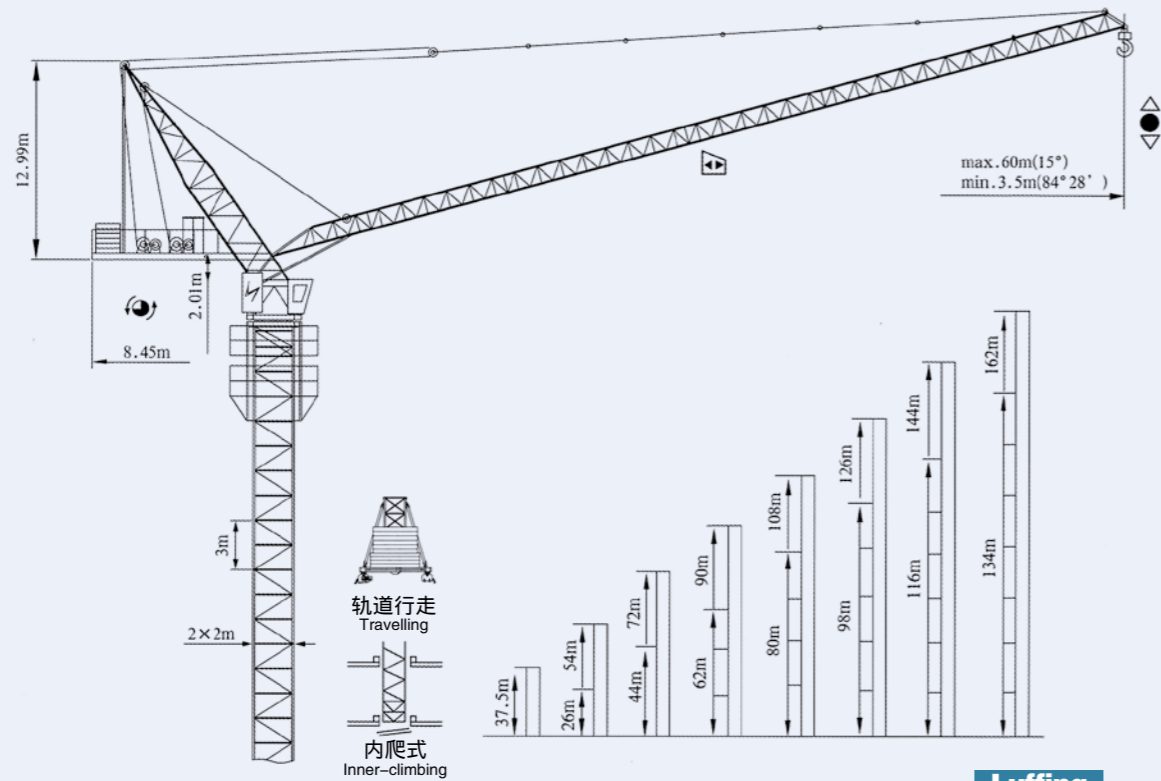
Jib m	倍率 Fall	R(Cmax) m	C(max) t	20	25	30	35	40	45
45	IV	18.6	6	5.8	5.5	4.3	3.4	2.6	2.2
	II	31	3	3	3	3	3	2.6	2.2

机构特性 Mechanism Characteristics

起升 Hoisting	速度 m/min	容量 t	速度 m/min	容量 t	Motor(kW)	行程 >380m
变幅 Trolleying			1min 40s		30	
回转 Slewing			0.7		2 x 5	
顶升 Jacking-up			0.4		7.5	
电源 Power Supply	380V/50Hz					
供电容量 Power Capacity						71.5kW

### D160

### 12T



Luffing

起重量载荷表 Load Capacity

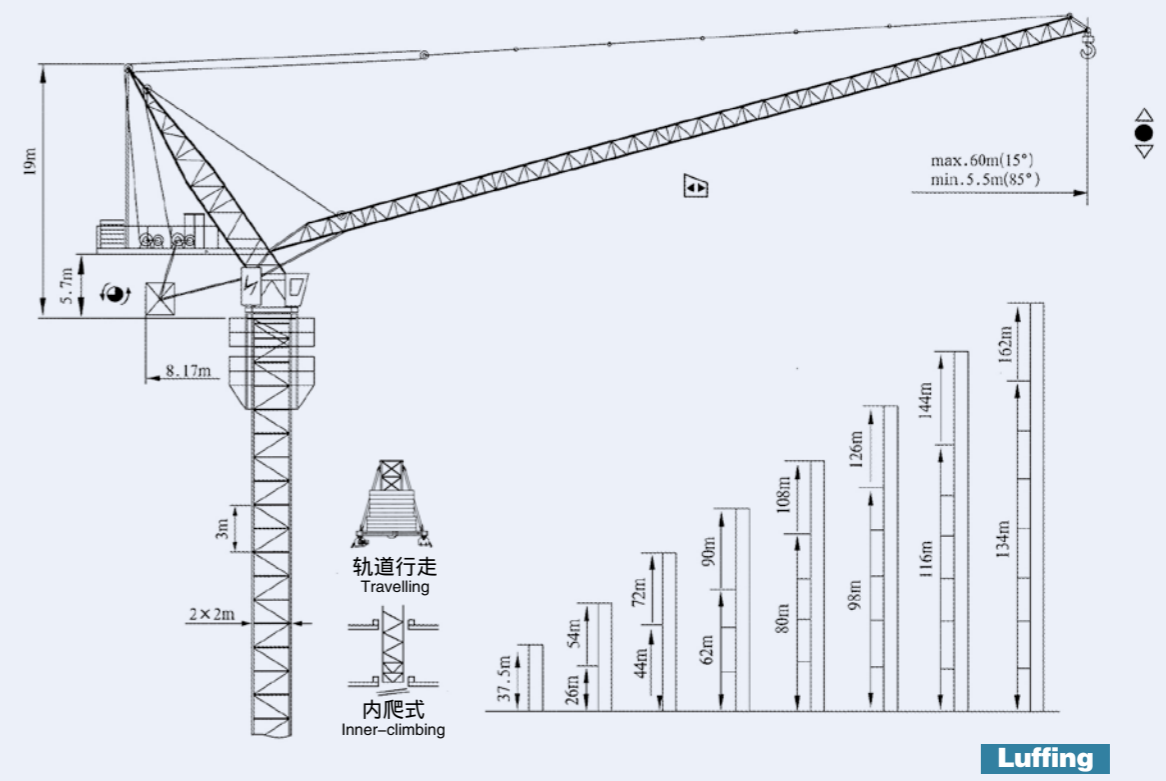
Jib m	倍率 Fall	R(Cmax) m	C(max) t	20	25	30	35	40	45	50	55	60
60	IV	17	12	10	7.50	6	4.90	4.10	3.50	3	2.50	2
	II	30	6	6	6	6	5	4.30	3.70	3.20	2.70	2.20

机构特性 Mechanism Characteristics

起升 Hoisting	变幅 Trolleying	回转 Slewing	顶升 Jacking-up	电源 Power Supply	供电容量 Power Capacity
m/min: 30/60 t: 6/3 Motor(kW): 37/37 600m >600m	m/min: 1min 40s 35	r/min: 0.7 2 x 5	m/min: 0.4 7.5	380V/50Hz	89.5kW

### D300

### 16T



Luffing

起重量载荷表 Load Capacity

Jib m	倍率 Fall	R(Cmax) m	C(max) t	15	20	25	30	35	40	45	50	55	60
60	IV	-	-	-	-	-	-	-	-	-	-	-	-
	II	29.1	8	8	8	8	7.75	6.58	5.72	5.05	4.51	4.08	3.70
50	IV	18.7	16	16	14.87	11.78	9.72	8.24	7.14	6.28	5.60		
	II	36.9	8	8	8	8	8	8	7.34	6.48	5.80		

机构特性 Mechanism Characteristics

起升 Hoisting	变幅 Trolleying	回转 Slewing	顶升 Jacking-up	电源 Power Supply	供电容量 Power Capacity
m/min: 30/60 t: 8/4 Motor(kW): 51.5 600m >600m	m/min: 1min 40s 51.5	r/min: 0.7 3 x 5	m/min: 0.4 11	380V/50Hz	129kW



### ■ 施工升降机 Building hoist

施工升降机广泛适用于工业或民用建筑、大型桥梁、竖井中人员及物资垂直升降运输。  
Building hoist is used for vertically lifting people, goods and materials in industrial or civil architecture, large-scale bridges and shafts.

## 施工升降机主要技术参数 Technical Datas for SC Building Hoist

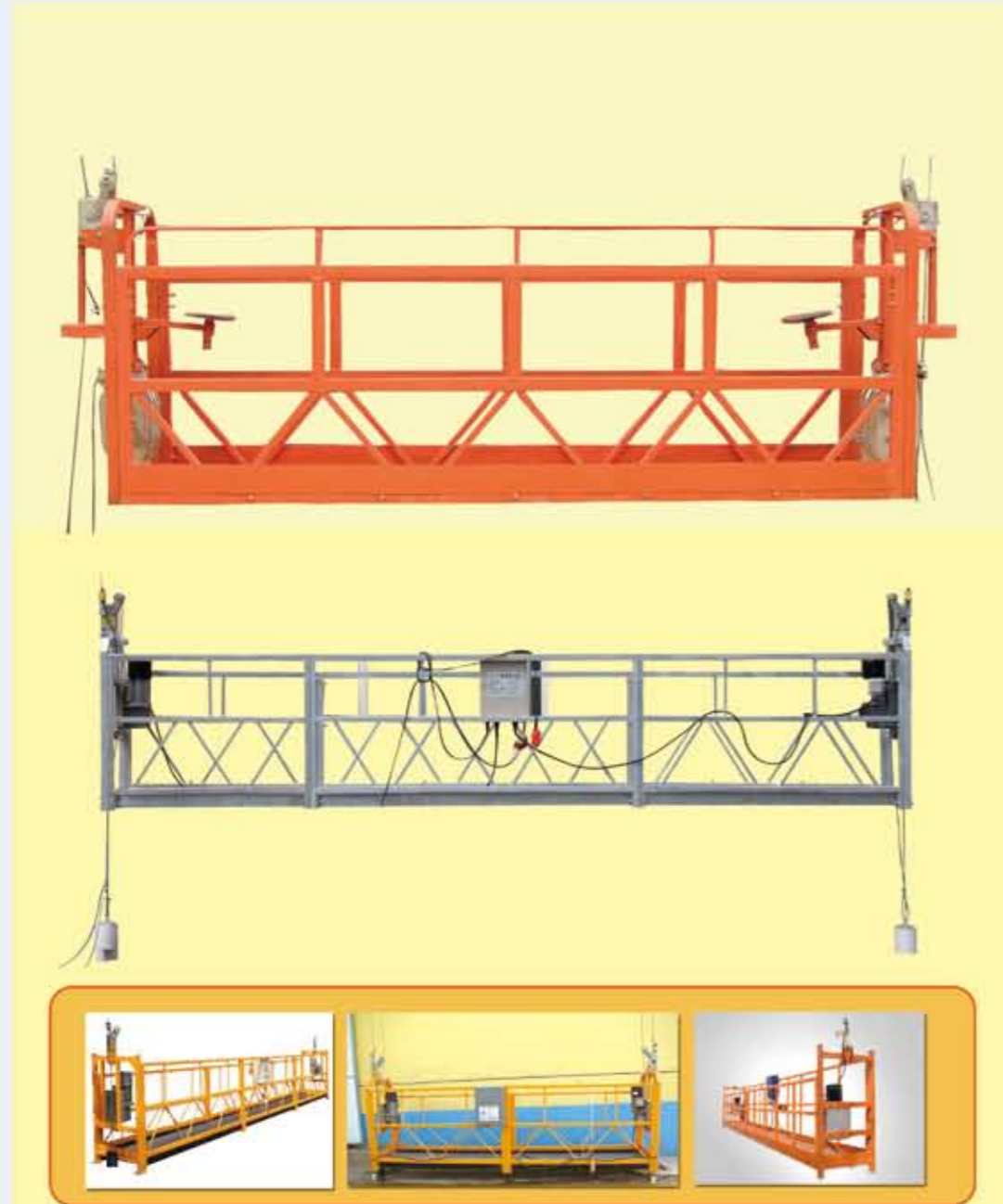
项目 Item		产品型号 product models				
		SC100	SC100/100	SC200	标准型SC200/200 Standard type	节能型SC200/200 Efficient type
额定载重量 Rated load	(公斤) (kg)	1000	2 × 1000	2000	2 × 2000	2 × 2000
额定乘员 Rated passengers	(人) (Number)	10	2 × 10	20	2 × 20	2 × 20
额定提升速度 Rated lifting speed	(米/分) (m/min)	34.4			30	
电动机功率 Motor power	(千瓦) (kW)	2 × 11	2 × 2 × 11	3 × 11	2 × 3 × 11	2 × 2 × 15
电动机制动力矩 Motor braking torque	(牛顿·米) (N.m)	120				
限速器动作速度 Tripping speed of speed governor	(米/分) (m / min)	51 - 56				
限速器额定制动载荷 Rated brake load of speed governor	(千牛顿) (K/ N)	30		40		
最大提升高度 Maximum lifting height	(米) (m)	150 - 200m				
吊笼尺寸 Cage size	(长 × 宽 × 高) (L × W × H) (米) (m)	3.2 × 1.3 × 2.6			3.2 × 1.5 × 2.6	
标准节尺寸 Mast section size	(长 × 宽 × 高) (L × W × H) (米) (m)	0.65 × 0.65 × 1.508 (0.80 × 0.80 × 1.508)				
标准节重量 Mast Weight	(公斤) (kg)	158/172				
额定安装重量 Rated erection load	(公斤) (kg)	200				

施工升降机（也称外用电梯，简称升降机）广泛适用于人员及物料垂直升降运输。在工业或民用建筑、大型桥梁、竖井中，均为不可缺少的良好运输设备，作为永久或半永久性的还可用于仓库、高塔等不同场所。

“汇友”牌施工升降机传动机构采用电机驱动形式，使齿轮齿条受力均匀，较之其它提升机构稳定、安全可靠，电路中设置了过载、限速等安全开关，每台吊笼均配备防坠安全器，且不用另设机房井道并且拆装方便、搬运灵活性强等优点，尤其在减轻施工人员的劳动强度、加快工程进度、提高工作效率中，起到明显的作用。

Building hoist (also referred to as external-use elevator, or hoist for short) is widely used for vertically transporting people, goods and materials. It is a sound and obligato transportation equipment in industrial or civil architecture, large-scale bridges and shafts. It can also be permanently or semi-permanently used in many other places such as warehouses and high towers.

“HYCM” brand building hoist adopts the electric motor form of transmission gear. Pinions and racks are under stress evenly, which makes the building hoist more stable, reliable and safer than other brands'. It has many advantages: overloading and rate-limiting safety switches are installed in the circuits; each basket is equipped with anti-falling safety device; no other hoistways need to be established; it is flexible in transporting. All these play a remarkable role in easing constructors' labor intensity, speeding up the progress of works and increasing work efficiency.



### ■ 高空作业吊篮 Aerial Suspended Platform

高空作业吊篮主要用于高层建筑的外墙施工、装修、清洗和保养，也可用于大型罐体、烟囱、水坝、桥梁、井架的施工。

Aerial Suspended Platform is used for the construction, decoration, cleansing and maintenance of high-rise buildings' outer walls as well as the construction of large tanks, chimneys, dams, bridges and derricks.

630型高空作业吊篮配置表  
ZLP630 Aerial Suspended platform configuration sheet

序号 NO.	配置名称 Configuration name	规格型号 Type	数量 Qty.	备注 Note
1	提升机 Hoister	LTD63	2 台 2 sets	
2	悬吊平台 Suspended platform	1.5m*0.69m 2m*0.69m 2.5m*0.69m	1 套 1 unit	
3	工作钢丝绳 Working wire rope	4*31w+NF-8.3	2 根 /100m 2 pieces/100m	
4	安全钢丝绳 Safety wire rope	4*31w+NF-8.3	2 根 /100m 2 pieces/100m	
5	安全锁 Safety lock	摆臂式防倾斜 Swing - arm type used to prevent tilting	2 套 2 sets	
6	行程限位块 Travel limiter		2 套 2 sets	
7	重锤 Heavy hammer	10kg	2 件 2 pieces	
8	电气箱 Electric box		1 套 1 set	
9	吊篮专用电缆 Specify cable for suspended platform	3 × 1.5	1 根 /95m 1 piece/95m	
10	悬挂机构 Suspended mechanism	调节高度 1.15—1.75m Adjustable height range: 1.15 - 1.75m 前梁伸长度 1.1—1.7m The length stretching out of the wall:1.1 - 1.7m	2 套 2 sets	
11	安全大绳 Big safety wire rope	强力尼龙 Forced nylon	2 根 /100m 2 pieces/100m	选配 Optional
12	砼配重块 Concrete counter-weight	25kg/ 块 25kg/piece	40 块 40 pieces	选配 Optional

注：报价不含选配项目 Note: The offer without optional parts

HYCM

企业展望 Corporate Prospects

JINAN HUIYOU  
CONSTRUCTION  
MACHINERY CO., LTD.

## 敢为天下先，志创百年业

自信人生二百年，会当击水三千里。

汇友建机将聚精英之才，强科技之力，用精品战略，擎起建工机械之帆。

放眼世界，志博云天，汇友建机将以广阔视野，

铸就建机百年格局，以王者的豪迈书写瞩目未来.....